

The background of the slide is a close-up photograph of a gold nugget. The nugget is dark and textured, with many small, irregular facets and some lighter, more crystalline areas. The lighting is dramatic, highlighting the rough surface and the metallic sheen of the gold.

Advanced Gold Exploration Inc.
This is Simple

THIS IS SIMPLE

Now is the Time



FORTUNE FAVORS THE JUNIORS?

Investors made a fortune buying stocks at 2016 levels. But the opportunity in today's market is better still.

With commodity prices remaining relatively high, there's a gaping mismatch between the fundamental strength of the resource sector versus equity valuations.

Junior Mining companies, who provide the exploration expertise will be favored in the upcoming Rally to fill the need for commodities upcoming market.

Michael Ballanger of GGM Advisory Inc. takes a look at current trends in the junior resources sector to tell you where he believes it is all headed.

My "GENERATIONAL CALL" is that junior gold and silver stocks (along with copper) will dominate the TSX Venture Exchange in 2024. Why? Because the entire sector is sold out, jettisoned, abandoned, and sponsor-less, all-powerful prerequisites for a bull market.

I stand by my forecast of new highs by New Year's Day, and now that we have achieved escape velocity above US\$2,000/ounce, I see little resistance until the old highs around US\$2,089.

Huge money is waiting on the sidelines, and it will deploy. The challenge is for me to determine exactly where; my call is gold.

THIS IS SIMPLE

- From **Point A** = Good Company, Good People, Good Projects.

—————> Advance projects

- To **Point B** = Sell.

A solid orange horizontal bar is positioned in the top left corner of the slide.

THIS IS SIMPLE

Step **One**
- Tight Capitalization

- Issued and outstanding: 54,650,757
- Outstanding Warrants: 4,613,151
- Outstanding Options: 250,000
- Insiders hold approximately 20%
- Associates also hold approximately 15%

Cap Table



THIS IS SIMPLE

Step **Two**

- Experienced
Management & Directors



MANAGEMENT

MANAGEMENT

James Atkinson M.Sc., P. Geo. – CEO and Director

President of Talisker Gold Corp. Director of Publicly listed companies
- Frontline Gold, CBLT, Big Red Mining.

Over 50 years in the Mining, Exploration and Environmental Business with major and Junior mining companies exploring and developing base metal and gold as well as industrial minerals.

Recently arranged sale of Talisker assets in the Wesdome area to Angus Gold for cash and shares which were distributed to Talisker shareholders as a special dividend.

Radovan Danilovsky – CFO and Director

President and CFO of McLaren Resources Inc. Director and Corporate Secretary of Carshaw Gold Mines Ltd. Manager and Chief Compliance office of Orthogonal Capital Management Corp.

DIRECTORS

Walter Henry – Independent Director

President and CEO Frontline Gold Inc.

Currently, Mr. Henry serves as a Director of Riverside Resources, Alturas Minerals Corp, Gold Candle Ltd., and Talisker Gold Corp. He has held various Chairman, Audit Committee Chairman and Director roles, in the following companies: Alexandria Minerals Corporation, Alturas Minerals Corp., Merrex Gold Corp, and Platinex Inc.

Mr. Henry has completed the requirements of the CFA program and Institute of Corporate Directors - Director Education Program.

Rodney Ireland – Independent Director

Board Member Sensor Technologies and Green Panada Capital Corp.

Rodney is well known for hosting various marketing podcasts including Bay Street Radio and Corporate Coffee at the St Regis.



THIS IS SIMPLE

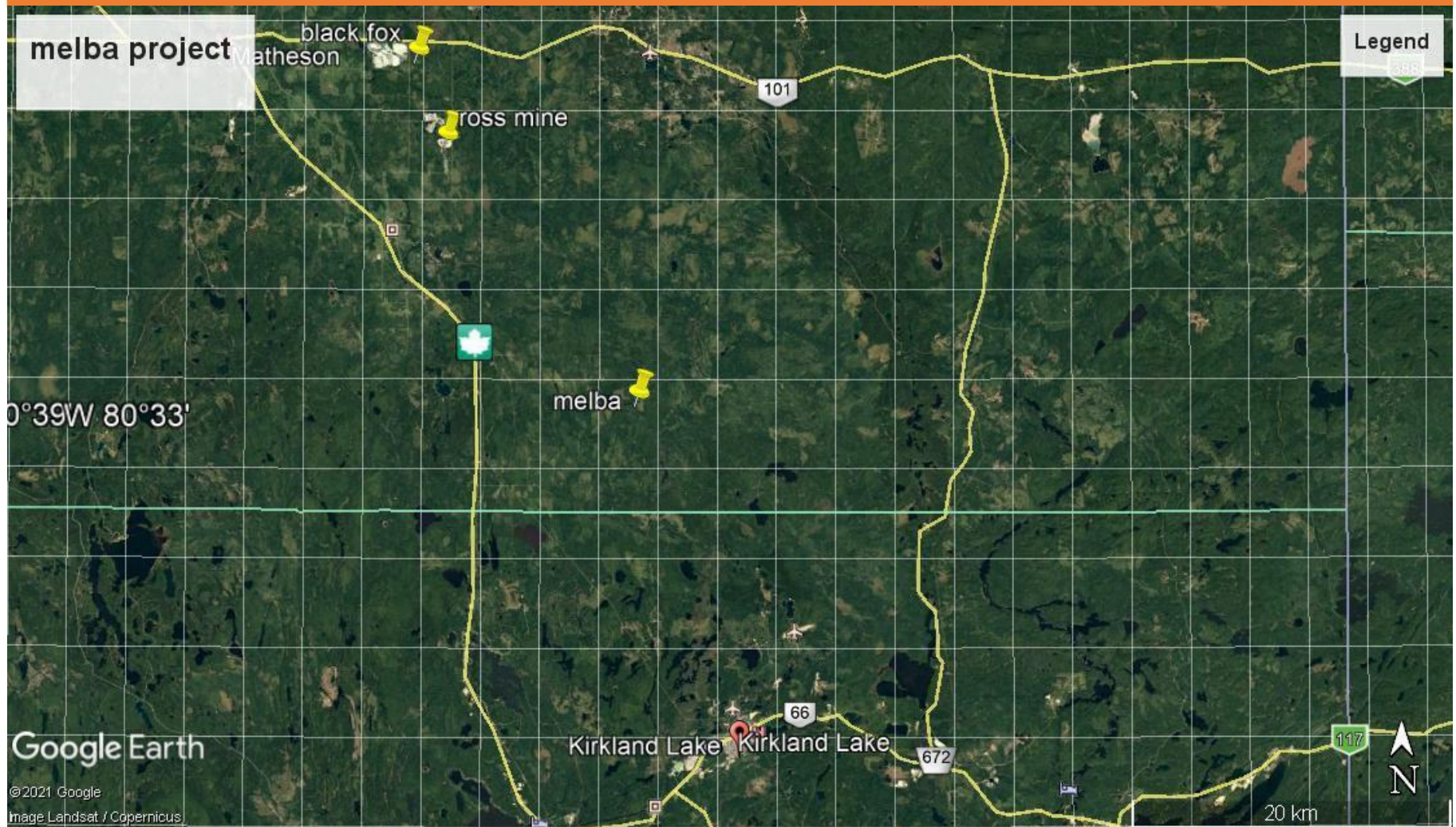
Step **Three**
- Great Projects

An aerial photograph of a winding river flowing through a deep, rocky valley. The river is a milky, light green color. The surrounding landscape is rugged with dark, rocky hillsides and some green vegetation. The word "MELBA" is overlaid in the center of the image in a large, orange, sans-serif font.

MELBA

Former Gold
Mine in the
Kirkland Lake
Area

MELBA LOCATION IS 15 KM NORTH OF KIRKLAND LAKE



This Is Simple = Gold is There



SAMPLES COLLECTED ON SURFACE DURING PRELIMINARY PROSPECTING INCLUDED 40 SAMPLES OVER 1 G/T GOLD AND 12 OVER 2 G/T GOLD INCLUDING MAXIMUMS OF 14.6 G/T, 11.3 G/T AND 22.5 G/T GOLD



CHANNEL SAMPLING RETURNED VALUES OF 73 G/T AND 135 G/T GOLD OVER 1- METER LENGTHS IN QUARTZ VEINS ON SURFACE



DRILLING INTERSECTED RESULTS UP TO 17 G/T GOLD OVER ONE METER IN VEINS

- Non 43-101 compliant resource of approximately 50,000 ounces of gold in underground workings and approximately 4,000 tonnes of gold-bearing material from the underground workings remain on surface.

Resource & Exploration Potential

An aerial photograph of a winding river in a valley. The river is a light greenish-brown color and flows through a series of sharp, rocky bends. The surrounding landscape is rugged, with dark, rocky hillsides and some green vegetation. The word "DOYLE" is overlaid in large, orange, sans-serif capital letters in the center of the image.

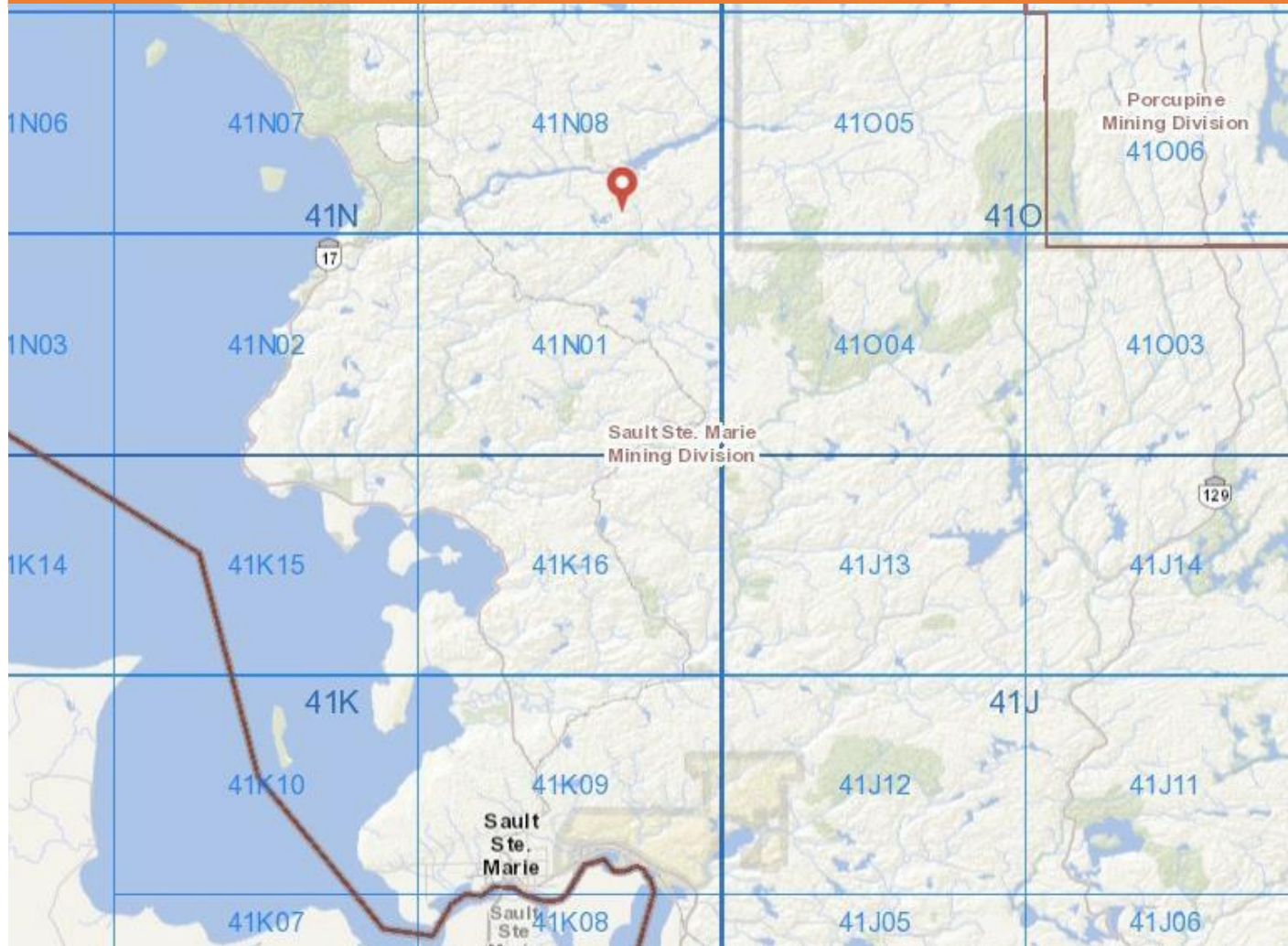
DOYLE

Searching
for another
Helmo in
Batchewana
Greenstone Belt

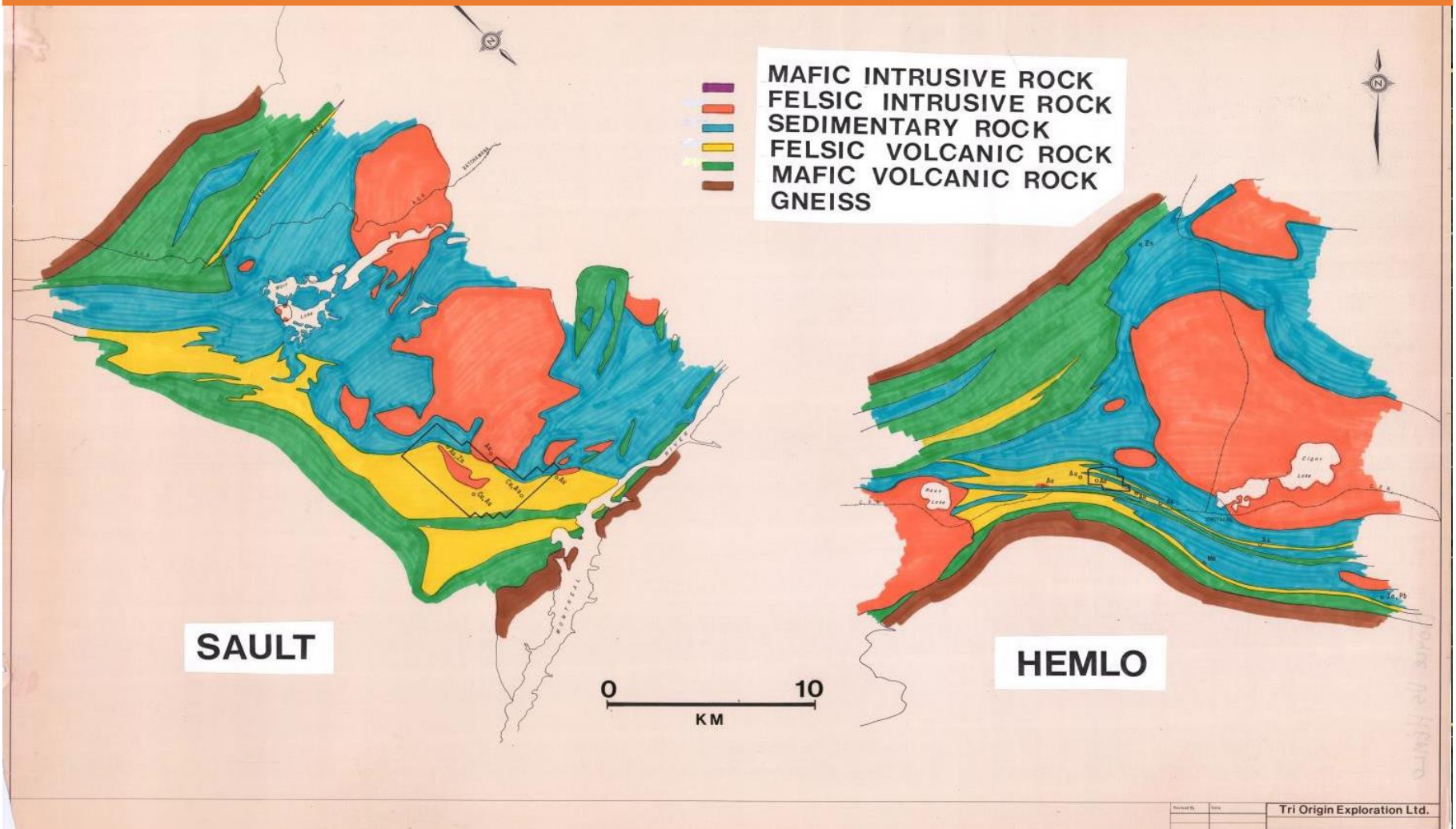
DOYLE HEMLO TARGET, GOLD

- Large property – over 169 claim units = 3,900 Hectares.
- Geology and mineralization resembles Hemlo (>21 million ounces of gold).
- Past drilling identified high-grade gold intersections.

DOYLE PROPERTY LOCATION NORTH OF SAULT STE MARIE



DOYLE & HEMLO



WHERE IS THE GOLD?

- Gold is found across the property with anomalous and lower grade occurrences common.
- High grade gold is known in three areas on the property from past drilling.
 - Drill hole 94-22 = **46 g/t Au over 1.0 m** in Quartz Vein
 - Drill Hole 95-34 = **14.6 g/t Au over 1 m in 9.0 m zone of 2.5 g/t Au** in disseminated pyrite zone
 - Drill Hole 93-03 = **7.5 g/t Au over 1 m** in massive sulphide
- **All areas need Follow-up.**

An aerial photograph of a winding river through a mountainous landscape. The river is a light greenish-brown color and flows through a deep, rocky canyon. The surrounding hills are covered in dense green forest. The sky is overcast and grey.

US BASED PROPERTIES

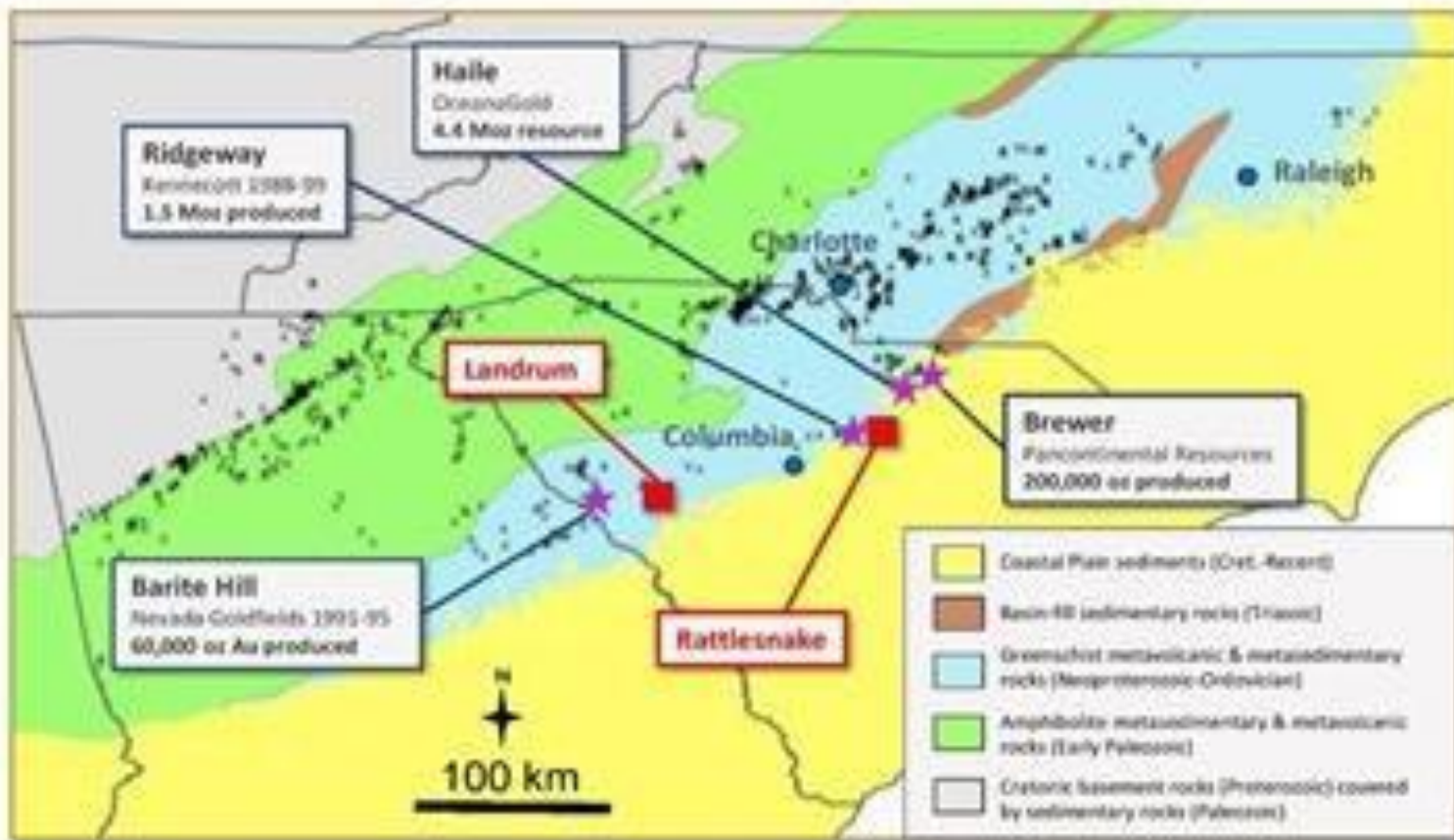
The Carolina
Gold Belt

- Situated in The “Carolina Gold Belt” in South Carolina.
- Site of the first “Gold Rush” in the United States – before California!
- Can still pan Gold in some streams in the area.
- Gold Belt is site of five past producers and one current producer – Haile - 2.45 million ounces Proven and Probable and 2.98 million ounces M&I (OceanaGold Web Site).
- The geology of the gold mineralization has been compared to Newfoundland.

US PROPERTIES

LANDRUM GOLD IN SOUTH CAROLINA SLATE BELT

Prolific Gold Mineralization
CGR Projects / Historic Gold Producers
Carolina Gold Belt



- The project is made up of two mineralized areas – Landrum and Faulkner.
- The Landrum property covers a past producing mine and extensions of the mineralized veins similar to typical orogenic gold occurrences.
- The Faulkner project contains gold in drill holes related to an epithermal target.

LANDRUM - FAULKNER

LANDRUM & FAULKNER SOUTH CAROLINA

LANDRUM

- Former gold mine with historic resource of 68,000 ounces gold.
- Open down plunge and along strike based on past drilling and modeling.
- Unexplored along strike to the north and south.

FAULKNER MOUNTAIN

- Gold in drill holes in epithermal setting near altered porphyry – never followed-up.

THIS IS SIMPLE – NEWS FLOW

- Begin Exploration of South Carolina Properties.
- Further sampling and geophysics – Budget approximately \$100K.
- Review results of compilation of Rattle Snake area, South Carolina acquire additional property – Budget approx. \$25K.
- Winter drilling at Melba and Doyle.
- Complete flowthrough financing of up to \$500,000 @ \$0.03 per share with warrant to fund winter drilling at Doyle and Melba.

WE BELIEVE IN BOOTS ON THE GROUND



Contact us

Jim Atkinson, CEO

Advance Gold Exploration Inc.

372 Bay Street, Suite 301

Toronto, Ontario M5H 2W9

Canada

Tel: + (647) 278-7502

Email: jim@advancedgoldexploration.com